



STRETCH SERIES

Planning & Solution | Factory Direct Sales | Turnkey Solutions | After-sale Service

www.jumei-glamping.com



STRETCH TENT SERIES

Appearance design

Spread the primitive beauty, The design inspiration comes from the vitality of wild dynamic, Dexterity slack, uninhibited personality

Quality detail

No:1 Natural material

Imported log support frame. 90mm Scots Pine Wood, Durable and not easy to deform. Coated with protective paint to prevent corrosion.ensuring a 10-year lifespan.

No:2 Wind resistant structure

Stable support rod structure, Fixed with a combination of log support poles and stainless steel pull ropes.Strong stability and wind resistance. Wind Load level 9.

No:3 Curved awning

The curved design can effectively drain rainwater.Prevent water and snow accumulation on the top.



No:4 Heat insulation technology

First Layer of outer fabric: 550gsm shading Mesh Fabric.
Second Layer of outer fabric: 550gsm TC Fabric.
Inner Fabric: 450gsm High performance Oxford Fabric.
Precision fabric, heat insulation and sun protection.

No:5 Insect-proof design

Equipped with high-density anti-mosquito door screen and window screen.Isolate mosquitoes in the wild.



GR16 Standard Product (GR Series)

National standard flame retardant, moisture-proof and mildew proof, flexible installation, no terrain restrictions

External Dimensions: 7.2m*9.7m

Inside Area: 23m²

Interior Dimensions: 4.1m*5.5m

Veranda Area: 47.5m²

External Height (Top/Side): 4.7m

Internal Height(T/S): 3.2m

Structure Material: Scots Pine Wood

Connector Material: Anti-corrosion Steel

Outer Fabric: 550gsm Canvas+Mesh Fabric

Inner Fabric: 450gsm Canvas

Wind Load: Level 9

Lifespan: 12 Years





GR24 Standard Product (GR Series)

National standard flame retardant, moisture-proof and mildew proof, flexible installation, no terrain restrictions

External Dimensions: 7.6m*10.5m

Inside Area: 24.8m²

Interior Dimensions: 4m*6m

Veranda Area: 37.4m²

External Height (Top/Side): 5m

Internal Height(T/S): 3.2m

Structure Material: Scots Pine Wood

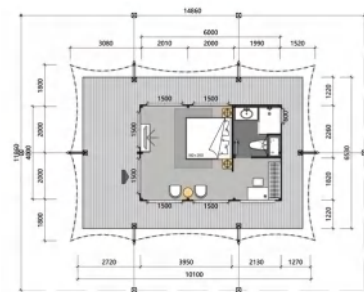
Connector Material: Anti-corrosion Steel

Outer Fabric: 550gsm Canvas+Mesh Fabric

Inner Fabric: 450gsm Canvas

Wind Load: Level 9

Lifespan: 12 Years





GR36 Standard Product (GR Series)

National standard flame retardant, moisture-proof and mildew proof, flexible installation, no terrain restrictions

External Dimensions: 8.8m*10.8m

Inside Area: 37.2m²

Interior Dimensions: 6m*6m

Veranda Area: 58.3m²

External Height (Top/Side): 4.7m

Internal Height(T/S): 3.2m

Structure Material: Scots Pine Wood

Connector Material: Anti-corrosion Steel

Outer Fabric: 550gsm Canvas+Mesh Fabric

Inner Fabric: 450gsm Canvas

Wind Load: Level 9

Lifespan: 12 Years





GR60 Standard Product (GR Series)

National standard flame retardant, moisture-proof and mildew proof, flexible installation, no terrain restrictions

External Dimensions: 9m*14.6m

Inside Area: 60m²

Interior Dimensions: 6m*10m

Veranda Area: 72m²

External Height (Top/Side): 5.4m

Internal Height(T/S): 3.2m

Structure Material: Scots Pine Wood

Connector Material: Anti-corrosion Steel

Outer Fabric: 550gsm Canvas+Mesh Fabric

Inner Fabric: 450gsm Canvas

Wind Load: Level 9

Lifespan: 12 Years





TR32 Standard Product (TR Series)

National standard flame retardant, moisture-proof and mildew proof, flexible installation, no terrain restrictions

External Dimensions: 8.5m*11.6m

Inside Area: 33.2m²

Interior Dimensions: 4.1m*8.1m

Veranda Area: 64.5m²

External Height (Top/Side): 5m

Internal Height(T/S): 3.2m

Structure Material: Scots Pine Wood

Connector Material: Anti-corrosion Steel

Outer Fabric: 550gsm Canvas+Mesh Fabric

Inner Fabric: 450gsm Canvas

Wind Load: Level 9

Lifespan: 12 Years





TR40 Standard Product (TR Series)

National standard flame retardant, moisture-proof and mildew proof, flexible installation, no terrain restrictions

External Dimensions: 8.2m*12.6m

Inside Area: 41m²

Interior Dimensions: 4m*10m

Veranda Area: 64.4m²

External Height (Top/Side): 5m

Internal Height(T/S): 3.2m

Structure Material: Scots Pine Wood

Connector Material: Anti-corrosion Steel

Outer Fabric: 550gsm Canvas+Mesh Fabric

Inner Fabric: 450gsm Canvas

Wind Load: Level 9

Lifespan: 12 Years





TR51 Standard Product (TR Series)

National standard flame retardant, moisture-proof and mildew proof, flexible installation, no terrain restrictions

External Dimensions: 10m*15.1m

Inside Area: 53m²

Interior Dimensions: 4.6m*11.6m

Veranda Area: 99m²

External Height (Top/Side): 5.3m

Internal Height(T/S): 3.2m

Structure Material: Scots Pine Wood

Connector Material: Anti-corrosion Steel

Outer Fabric: 550gsm Canvas+Mesh Fabric

Inner Fabric: 450gsm Canvas

Wind Load: Level 9

Lifespan: 12 Years





TR87 Standard Product (TR Series)

National standard flame retardant, moisture-proof and mildew proof, flexible installation, no terrain restrictions

External Dimensions: 11.7m*16.4m

Inside Area: 90m²

Interior Dimensions: 6.7m*13.5m

Veranda Area: 104m²

External Height (Top/Side): 5.6m

Internal Height(T/S): 3.2m

Structure Material: Scots Pine Wood

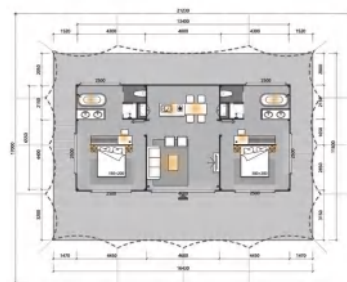
Connector Material: Anti-corrosion Steel

Outer Fabric: 550gsm Canvas+Mesh Fabric

Inner Fabric: 450gsm Canvas

Wind Load: Level 9

Lifespan: 12 Years





DR32 Standard Product (DR Series)

National standard flame retardant, moisture-proof and mildew proof, flexible installation, no terrain restrictions

External Dimensions: 8.1m*11.5m

Inside Area: 33.8m²

Interior Dimensions: 4.9m*7.4m

Veranda Area: 62.8m²

External Height (Top/Side): 4.7m

Internal Height(T/S): 3.4m

Structure Material: Scots Pine Wood

Connector Material: Anti-corrosion Steel

Outer Fabric: 550gsm Canvas+Mesh Fabric

Inner Fabric: 450gsm Canvas

Wind Load: Level 9

Lifespan: 12 Years





DR45 Standard Product (DR Series)

National standard flame retardant, moisture-proof and mildew proof, flexible installation, no terrain restrictions

External Dimensions: 8.7m*12.5m

Inside Area: 46.7m²

Interior Dimensions: 6.2m*7.9m

Veranda Area: 64.6m²

External Height (Top/Side): 4.7m

Internal Height(T/S): 3.4m

Structure Material: Scots Pine Wood

Connector Material: Anti-corrosion Steel

Outer Fabric: 550gsm Canvas+Mesh Fabric

Inner Fabric: 450gsm Canvas

Wind Load: Level 9

Lifespan: 12 Years





DR55 Standard Product (DR Series)

National standard flame retardant, moisture-proof and mildew proof, flexible installation, no terrain restrictions

External Dimensions: 10.6m*12.2m

Inside Area: 56.5m²

Interior Dimensions: 7.1m*8.1m

Veranda Area: 74m²

External Height (Top/Side): 5m

Internal Height(T/S): 3.4m

Structure Material: Scots Pine Wood

Connector Material: Anti-corrosion Steel

Outer Fabric: 550gsm Canvas+Mesh Fabric

Inner Fabric: 450gsm Canvas

Wind Load: Level 9

Lifespan: 12 Years





DR69 Standard Product (DR Series)

National standard flame retardant, moisture-proof and mildew proof, flexible installation, no terrain restrictions

External Dimensions: 8.9m*16.6m

Inside Area: 71m²

Interior Dimensions: 6.2m*11.8m

Veranda Area: 79.3m²

External Height (Top/Side): 5m

Internal Height(T/S): 3.4m

Structure Material: Scots Pine Wood

Connector Material: Anti-corrosion Steel

Outer Fabric: 550gsm Canvas+Mesh Fabric

Inner Fabric: 450gsm Canvas

Wind Load: Level 9

Lifespan: 12 Years





ER59 Standard Product (ER Series)

National standard flame retardant, moisture-proof and mildew proof, flexible installation, no terrain restrictions

External Dimensions: 11 m*11m

Inside Area: 60.5m²

Interior Dimensions: 8.5m*8.5m

Veranda Area: 41m²

External Height (Top/Side): 5m

Internal Height(T/S): 3.4m

Structure Material: Scots Pine Wood

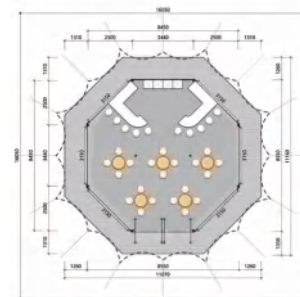
Connector Material: Anti-corrosion Steel

Outer Fabric: 550gsm Canvas+Mesh Fabric

Inner Fabric: 450gsm Canvas

Wind Load: Level 9

Lifespan: 12 Years





ER101 Standard Product (ER Series)

National standard flame retardant, moisture-proof and mildew proof, flexible installation, no terrain restrictions

External Dimensions: 10.8m*21.8m

Inside Area: 103.4m²

Interior Dimensions: 8.1m*14.1m

Veranda Area: 132m²

External Height (Top/Side): 5.5m

Internal Height(T/S): 3.4m

Structure Material: Scots Pine Wood

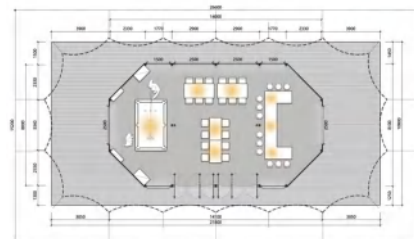
Connector Material: Anti-corrosion Steel

Outer Fabric: 550gsm Canvas+Mesh Fabric

Inner Fabric: 450gsm Canvas

Wind Load: Level 9

Lifespan: 12 Years





ER145 Standard Product (ER Series)

National standard flame retardant, moisture-proof and mildew proof, flexible installation, no terrain restrictions

External Dimensions: 11.2m*27.3m

Inside Area: 148m²

Interior Dimensions: 8.1m*19.6m

Veranda Area: 158.9m²

External Height (Top/Side): 5.5m

Internal Height(T/S): 4m

Structure Material: Scots Pine Wood

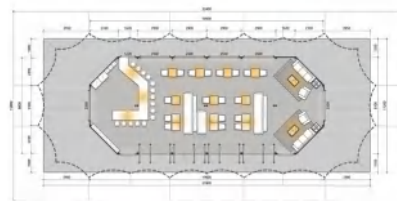
Connector Material: Anti-corrosion Steel

Outer Fabric: 550gsm Canvas+Mesh Fabric

Inner Fabric: 450gsm Canvas

Wind Load: Level 9

Lifespan: 12 Years





ER193 Standard Product (ER Series)

National standard flame retardant, moisture-proof and mildew proof, flexible installation, no terrain restrictions

External Dimensions: 10.6m*28.4m

Inside Area: 195.7m²

Interior Dimensions: 8.1m*25.5m

Veranda Area: 104.3m²

External Height (Top/Side): 5.8m

Internal Height(T/S): 4m

Structure Material: Scots Pine Wood

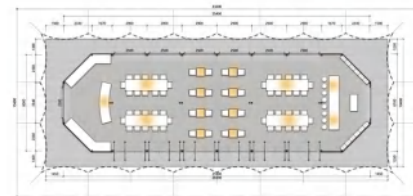
Connector Material: Anti-corrosion Steel

Outer Fabric: 550gsm Canvas+Mesh Fabric

Inner Fabric: 450gsm Canvas

Wind Load: Level 9

Lifespan: 12 Years



PREFABRICATED BUILDING OVERALL SOLUTION INTELLIGENT MANUFACTURER



Guangdong Yards Architecture Technology Co., Ltd.

✉ info@yards.com.cn

🌐 yardstent.cn

Guangdong POMPIMiC Co., Ltd.

✉ info@yards.com.cn

🌐 www.pompimic.com

Jumei Tent Technology Co., Ltd.

✉ info@jumei-tents.com

🌐 jumei-glamping.com

SERVICE HOTLINE

400-699-9559

ADDRESS: No. 7, Dong Er Lu, Dayuan Village,
Hengli, Nansha, Guangzhou, Guangdong, China



official account



TikTok