

雅 奢 集 团  
Y A R D S   G R O U P

广州 | 北京 | 成都 | 新疆

12<sup>th</sup>

12年专注篷房 行业领军品牌  
TWELVE YEARS SPECIALISING IN TENTS

## EDITORIAL 前言

Yards is a leading travel space creator in china, always taking design and innovation as the core driving force throughout the whole process of product manufacturing (creation, planning, development, production, service and marketing), leading the new trend in the field of vacation accommodations and providing users with unforgettable, close-to-nature vacation experiences.

雅奢集团是中国领先的旅居空间创造商，始终以设计与创新为核心驱动力，贯穿产品制造的全过程（创作、规划、开发、生产、服务和营销），引领度假住宿领域新潮流，为用户提供难忘、贴近自然的度假体验。

We work with many campgrounds, resorts and theme parks in china and around the world. We are proud to say that we have produced a total of 11,500 products, which are distributed in more than 5,000 campgrounds and resorts in more than 70 countries.

我们与众多中国及全球各地的露营地、度假村和主题公园合作。可以自豪的说，我们已生产了总计 11,500 件产品，这些产品分布在 70 多个国家，5000 多个露营地和度假村中。

## SUSTAINABLE DEVELOPMENT

Yards champions sustainability with green building materials certification and china CQC certification. Our products adhere to zero-terrain-disruption principles and achieve 90% material reusability.



### 可持续发展

雅奢践行可持续理念，公司已通过绿色建材认证及中国质量认证中心 CQC 认证，产品研发遵循“零地貌破坏”原则，材料拆装复用率高达 90%。

## MARKET RECOGNITION

Yards has cooperated with many famous resort brands to create new cultural tourism business, and has received their unanimous praise.

### 市场好评

雅奢曾与众多知名度度假区品牌合作打造新文旅业态，得到了他们的一致好评。

## EXCELLENT QUALITY

Yards has state-of-the-art production facilities, and the company is ISO 9001 and CE certified to meet commercial, quality and environmental standards. Our tents have been awarded nearly 100 patents for invention, appearance and utility models.

### 质量过硬

雅奢拥有最先进的生产设施，公司已通过 ISO 9001 及 CE 认证，符合商业、质量及环境标准。并获得了发明、外观、实用新型等近 100 项专利。





COMMERCE

Mobile Ecological Intelligent  
Chain Business Complex

移动生态智慧连锁  
商业综合体

TOURISM

Forest-based Wellness &  
Resort Complex

Eco-Resort

Boutique B&B

森林康养及  
度假综合体

生态度假酒店

精品民宿

Cultural-Tourism  
Real Estate Eco-Experience  
Center

Cultural Tourism Town

Integrated Tourism  
Camping Hub

文旅地产生态  
体验中心

文旅小镇

全域旅游共享营地  
/ 露营地

VILLAGE

Luxury Rural Regeneration  
Retreat

Agro-Tourism Complex &  
Shared Farmstead Ecosystem

乡村振兴高端生态  
旅游度假村

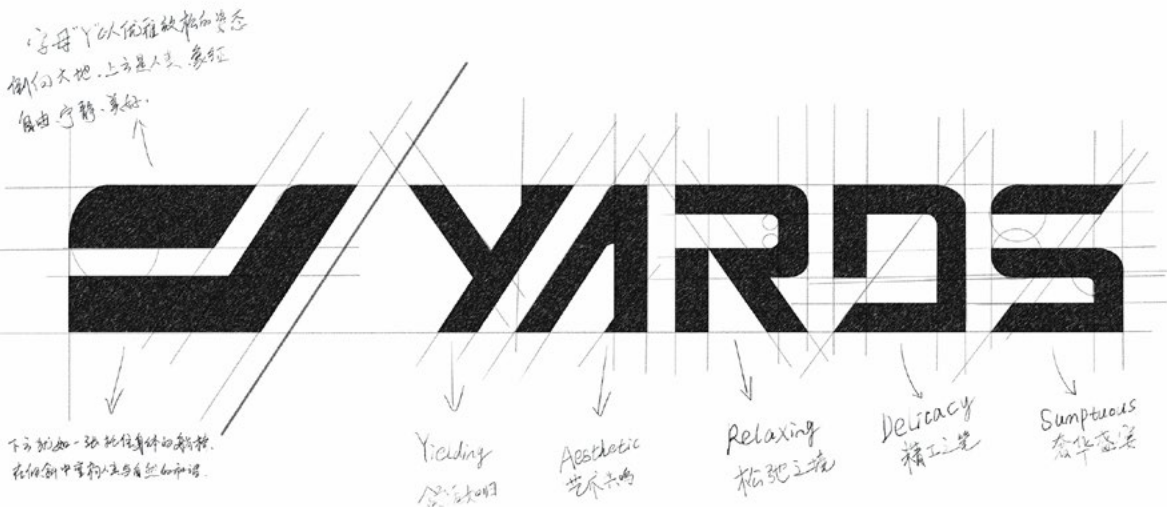
田园综合体及  
共享农庄生态

APPLICATIONS



# YARDS BRANDS

品牌简介



## EXPANSIVE COURTYARD | LIVING AS YOU WISH.

YARDS·雅奢 | 院纳天地，随心所居

### “YARDS”

Originates from the idea of courtyard, inheriting the poetic core of the English word ‘yard’, and was originally created by brand founder Qidi Wang, aiming to create yielding, aesthetic, relaxing, delicacy, and sumptuous outdoor living spaces in a secluded and picturesque natural place, providing you with a boundless, free and comfortable courtyard vacation experience.

### 雅奢

源自庭院之思，承英文“院子”的诗意内核，由品牌创始人王启迪先生最初创立，旨在环境清幽、风景如画的自然之地，打造 Yielding（灵活的）、Aesthetic（艺术的）、Relaxing（松弛的）、Delicacy（精致的）、Sumptuous（豪华的）户外生活空间，为您提供无界、自由舒适的庭院度假体验。

# TENT STRUCTURE

## 12 年旅居空间创领者

Originated in 2013, Yards Holding Group is a technology-based construction company engaged in assembly building research and development, design, production, installation and after-sales service, headquartered in Nansha, Guangzhou.

With a business scope covering four assembly building business segments, namely, tent house, tiny house, safari tent, stretch tent, and the projects are widely used in the fields of culture and tourism, commerce, residence and municipal government.

雅奢控股集团起源于 2013 年，是一家从事装配式建筑研发、设计、生产、安装、售后服务于一体的科技型建筑公司，总部位于广州南沙，业务范围覆盖帐屋 MiC、铝屋 MiC、轻奢帐篷、野奢帐篷四大装配式建筑业务板块，项目广泛应用于文旅、商业、住宅、市政等领域。

12 年行业精耕，我们先后荣获广东省可持续发展企业、南沙优质管理企业、国家知识产权优势企业、国家高新技术企业等荣誉。

# SUB-BRAND

## 旗下子品牌

Offering premium products, cost-effective options, and custom solutions to meet diverse needs.

汇聚高端臻品、高性价比优选与个性化定制服务，以多元产品矩阵满足差异化需求。



Cost-effective and aesthetic tent architecture brand.  
雅奢品牌是主打轻奢、野奢高性价比系列产品的帐篷建筑美学品牌。



12-year foreign trade experience recognized by industry.  
聚美品牌深耕海外帐篷建筑市场 12 载，以精研技术筑就行业口碑。



Anchor market demand and focus on R&D, innovate high-end tents.  
篷派品牌锚定市场需求精研产品，持续革新高端帐篷建筑产品。



Senior design team to provide full project planning and design.  
设计院拥有一支资深设计团队，提供项目前期全案规划设计服务。



# YARDS HISTORY

## 发展历程

### 2013–2014

#### ESTABLISHMENT

Yards officially commenced operations, adopting an integrated production-sales model, Keep improving our products and tech to build a strong foundation.

#### 成立之初 夯实基础

雅奢正式成立，开始产销一体模式，不断打磨产品与技术，夯实基础。

### 2015–2016

#### EXTENSIONS

The business volume has been growing rapidly with more than 100 projects delivered nationwide.

#### 渠道铺设 业务扩展

全方位铺设终端渠道，业务量迅猛增长，全国交付项目突破 100 家。

### 2017–2018

#### INNOVATION

Launched R&D to boost smart production, creating an integrated “Innovate-Make-Sell” ecosystem.

#### 自主研发 凝练优势

创立研发设计部门，创新智造助推产能升级，开启“研发-生产-销售”三位一体模式。

### 2019

#### BREAKTHROUGHS

Plant II launched (10,000 m<sup>2</sup>), break through the industry simple tent pattern, open the new mode of light luxury tent.

#### 内外兼修 引领潮向

第二分厂正式投产，占地面积近 10000 m<sup>2</sup>，突破行业简易帐篷格局，开启轻奢帐篷新模式。

### 2020–2021

#### REINFORCE

Joint expert team, the same year to create MIC products obtained over 200 national patents and were awarded the title of National High tech Enterprise.

#### 大咖加持 强强联合

引入专家团队指导工艺研发，同年创研 MIC 产品累获国家专利 200 余项，获评国家高新技术企业。

### 2022–2023

#### GLOBALLY

10 consecutive years of double-digit net profit growth, the business covers 7 major application scenarios, and more than 80 self-developed products are exported to the world.

#### 持续增长 畅销海外

连续 10 年净利润双增长，80 余款自研产品覆盖 7 大应用场景，远销全球 70 多个国家。

### 2024–2025

#### UPGRADE

Awarded 3 national invention patents; built 4 major product series after 3 iterations; standardized wisdom manufacturing in the whole process to improve quality and efficiency.

#### 强练内功 品质至上

获评 3 项国家发明专利；历经 3 次迭代构建 4 大产品系列；全流程标准化智造，提质增效。





Yards Holding Group was founded on the vision to reconnect urban souls with nature through transformative tent architecture. Upholding our mission to "let architecture grow with nature and life return to its essence," we've assembled an expert team with 10+ years of specialized experience across R&D, planning, and sustainable construction. Our "zero-terrain-impact" philosophy merges eco-technology with wilderness luxury, creating poetic spaces where humanity and nature harmoniously coexist.

雅奢控股集团的诞生源于想让人们在自然中寻回灵魂的栖息地，我们秉持着“让建筑生长于自然，让生活回归本真”的使命，组建了一支由产品研发、项目规划、生产及施工售后组成的专业团队，团队成员平均拥有 10 年以上帐篷建筑领域深耕经验。所有的产品开发遵循“零地貌破坏”原则，将野奢美学与绿色环保科技融合，以帐篷建筑为媒介，让每一处空间都成为连接人与自然的诗意栖居。

## CORE TEAM

### 核心成员

From meticulous material selection to precision production, from thoughtful planning to seamless execution, our team upholds the ethos of "crafting extraordinary quality with artistry." Every detail meets exacting standards, ensuring a flawless end-to-end experience for discerning global clients.

12 年行业精耕，从材质甄选到生产把控，从前期规划到安装售后，团队秉承“以匠心铸就非凡品质”核心精神，以严苛的标准把控每个环节，构建全链条品质服务体系，旨在为全球高端客户缔造超越期待的品质体验。



MR. WANG | CEO

Founder of yards holding group  
雅奢控股集团创始人



MR. CHENG

General Manager 总经理

Responsible for the entire process of material selection-production-quality control

负责选材 - 生产 - 品控全过程



MR. ZHANG

Engineering Manager 总经理

Overall solution to various engineering problems

统领解决各类工程难题



MR. HE

Group Deputy General Manager  
副总经理

Collaborative Production and Supply Chain Management  
协同生产与供应链管理



MS. YE

Head of Planning 规划负责人

Leading the planning and design of various projects  
主导各类项目规划设计



MR. DU

Senior Product Designer  
资深产品设计

Leading the research and development of several ace product lines  
主导多个王牌产品线研发



MS. LIANG

Director of Foreign Trade  
外贸总监

Responsible for overseas market expansion and deep cultivation  
负责海外市场拓展与深耕



# YARDS SCALE

## 智造实力

Leveraging advanced equipment, we've established an integrated manufacturing ecosystem spanning raw material procurement, precision component processing, finished product assembly, and logistics. Our multitiered QC system enforces end-to-end standardized production, delivering 8M+ annual unit capacity.

配备先进生产设备，构建起覆盖原材料采购、核心部件加工、成品组装及仓储物流的完善生产制造产业链。建立多层级品控节点，实施全流程标准化生产管理品控体系，平均产能超 800 万。



# YARDS SERVICE

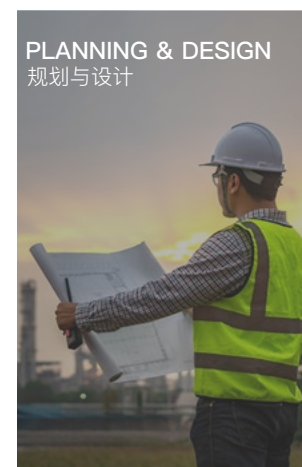
## 专业服务

We deliver end-to-end project solutions with three flexible installation options: On-site installation by our expert team; Technical guidance for local crews; DIY with instructional kits. All projects come with comprehensive after-sales support for worry-free operation.

提供覆盖项目全周期的一站式解决方案，针对不同项目需求，我们提供三大灵活安装模式：自有专业团队到场安装、指派一名技术人员指导当地施工队安装、提供安装说明 / 安装视频客户自行安装。项目落地后，我们提供完善的售后保障体系，以确保客户无后顾之忧。

# SERVICE PROCESS

## 服务流程



PLANNING & DESIGN  
规划与设计



QUOTATION & CONTRACT EXECUTION  
报价及签约



PRODUCTION & MANUFACTURING  
生产制造



INSTALLATION & HANDOVER  
安装交付

# SALES SERVICE

## 售后保障

- Response within 24 hours after sale  
售后 24 小时内响应
- 15 days replacement for quality problems  
15 天质量问题包换
- Free non-artificial warranty for 1 year  
1 年内非人为免费保修
- Make regular return visits  
定期回访
- Regular return visits for lifetime maintenance  
终身维修
- Free technical support  
免费技术支持
- Provide post-scientific maintenance advice  
提供科学保养建议
- Product Iteration Services  
产品迭代服务

Yards three immersive showrooms (4,000 m<sup>2</sup> total) feature 1:1 replicas of glamping resorts, enabling clients to experience product performance in real-world settings. Our 50+ design specialists deliver tailored master planning – from product R&D to project execution – through dedicated client engagement.

雅奢设有 4000 m<sup>2</sup> 三大展厅，一比一还原帐篷度假区实地应用场景，让客户沉浸式感受产品落地效果。组建了一支 50 余人的专业设计团队，提供涵盖产品研发、项目规划等一对一全案规划设计服务。







# SAFARI TENTS

## 轻奢系列



The safari series adopts a color palette that blends extremely well with the natural environment and can blend well with outdoor grass, woods and mountain landscapes. The unique triangular appearance not only provides stability, but also embodies the aesthetic value of simplicity and modernity. The main structure is made of imported camphor pine solid wood, and the inner and outer tent materials are made of Oxford cloth and PVC coated cloth, which highlights the beauty of minimalist nature and at the same time, ensures moisture-proof and mildew-proof, wind-resistant and shock-resistant performance.

轻奢系列采用与自然环境极致相融的色调，能够很好地融入户外草地、树林和山地景观，独特的三角形外观不仅具有稳定性，更体现了简洁、现代的美学价值。主体结构采用进口樟子松实木，内外帐材料采用帆布和 PVC 涂层布，彰显极简自然之美的同时，保证了防潮防霉、抗风抗震的性能。

*Luxury tents sourced from YARDS*

豪帐篷 雅奢造



# YARDS TENTS

## 轻奢系列总览

5 large models, nearly 14 products, to meet the needs of various scenarios

5 大型号，近 14 款产品，满足各类场景需求

A | A15 AX17 AL30



B | B32 B40 BL45



BS | BS35 BS48



E | E32 E40 EC32 EC40



D | D28 DX28





## EXTERIOR

Triangular top, khaki tarpaulin, original wooden frame, the overall design is simple and elegant, like the residence of the elves in nature, lightly perched on the emerald green slopes, with the blue sky, white clouds, green grass and flowers to gather together and reflect each other.

### 简约外观 与自然光相映成趣

三角形顶部、卡其色篷布、原木色框架，整体设计简洁优雅，如同大自然中的精灵居所，轻盈地栖息在翠绿的山坡上，与蓝天白云、绿草繁花相聚一堂，相映成趣。

- 90mm solid pinewood frame structure, not easy to deform, protect paint anti-corrosion
- Outer PVC coated fabric cover, flame retardant and UV resistant; inner canvas, wear-resistant and mildew resistant.
- Stable triangular structure, three-dimensional slop design, avoid accumulation of water and snow
- Strong stability, high wind resistance and earthquake resistance, service term 12 years
- 90 毫米进口樟子松实木框架，不易变形，保护漆防腐蚀
- PVC 涂层外帐布，阻燃抗 UV；帆布内帐，耐磨防霉
- 稳固三角结构，立体化坡度设计防积水、防积雪
- 强稳定性，抗风 8 级，抗震 7 级，12 年使用寿命



· 产品外观展示 · PRODUCT APPEARANCE DISPLAY





· PRODUCT INTERNAL DISPLAY · 产品内部展示

## INTERIOR

The interior layout is square, with a bathroom, leisure area and rest area and other functional areas; quiet and easy-going log style, with the beauty of clean and pure, mostly one door and four windows design, to ensure ventilation and lighting and privacy.

### 舒适原木 自然慢生活

内部方正布局，设有卫生间、休闲区与休息区等功能区；恬静随和的原木风格，美得干净纯粹，多为一门四窗设计，保证通风采光与私密性。

- Functional areas such as rest area, recreation area and restroom can be set up, and some products are designed on two floors.
- Three-layer tarpaulin design for windows: waterproof PVC tarpaulin, anti-mosquito screen curtains, blackout Oxford cloth.

- 可设休息区、娱乐区、卫生间等功能区，部分产品两层设计
- 窗户三层篷布设计：防水 PVC 篷布、防蚊纱帘、遮阳牛津布



# QUALITY MATERIALS SOURCE OF COMFORT

优质选材 舒适之源



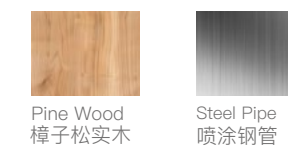
## ROOFING SYSTEM 屋面系统

- ① 850g-PVC Coated Fabric/550g-TC Canvas  
850G-PVC 涂层布 / 550G-TC 帆布
- ② Imported Camphor Pine Solid Wood Frame  
进口樟子松实木框架
- ③ Rust-Proof Steel Connectors  
防锈钢材连接件



KHAKI/ 卡其

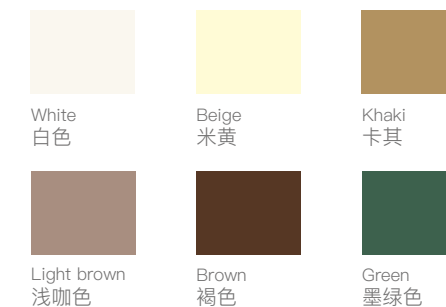
## 1 FRAME MATERIAL 框架材质



Pine Wood  
樟子松实木

Steel Pipe  
喷涂钢管

## 2 EXTERNAL COVER 外帐



White  
白色

Beige  
米黄

Khaki  
卡其

Light brown  
浅咖色

Brown  
褐色

Green  
墨绿色

## 1 FRAME MATERIAL 框架材质

## 2 EXTERNAL COVER 外帐

## 3 INNER FABRIC 内帐

## 4 ENTRANCE DOOR 入户门

## 3 INNER FABRIC 内帐



Khaki  
卡其

Off-White  
米白

Quicksand gold  
流沙金

## 4 ENTRANCE DOOR 入户门



Canvas  
篷布

Glass Door  
玻璃门

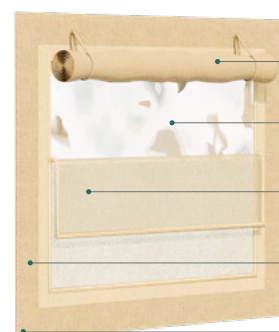


BEIGE/ 米黄



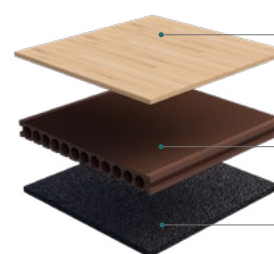
BROWN/ 褐色

## WALL SYSTEM 墙面系统



- Semi-Shaded Canvas  
半遮光帆布
- Waterproof PVC Tarpaulin  
防水 PVC 篷布
- Anti-Mosquito Screen  
防蚊纱帘
- 450G Canvas Fabric  
450G 帆布
- Insulation Fabric  
保温布

## GROUND SYSTEM 地面系统



- Spc Waterproof Flooring  
/Multi-Layer Solid Wood Flooring  
SPC 防水地板 / 多层实木地板
- Plastic Wood Flooring  
/20mm Cement Board  
塑木地板 / 20MM 水泥板
- Galvanized Steel  
镀锌钢材

## PERFORMANCE 性能特点





CONFIGURABLE

多元配置可选

● Standard   ▲ Hardcover   ■ Deluxe



Structure: galvanized steel wood structure with connectors and accessories	●	▲	■
Fabric: PVC outer cover; inner canvas with fixed fabric accessories	●	▲	■
Doors and windows: canvas door; waterproof zipper; with fabric anti-mosquito screen doors and windows	●	▲	■
Glass door: solid wood door frame; aluminum alloy single-glass toughened sliding door; electronic password lock		▲	■
Partition wall: quick-fit wood composite fiberboard wall panel; edge-sealing treatment		▲	■
Decoration:Wood veneer fiberboard with edge-sealing treatment		▲	■
Flooring: multi-layer solid wood flooring; aluminum alloy baseboard; moisture proof film		▲	■
Water and electricity: indoor water and sewage system, hot and cold water pipe system; main electric box; switch and socket panels		▲	■
Bathroom: waterproof floor; composite gate; intelligent toilet; glass partition; washing basin/mirror; hardware accessories			■
Furniture: solid wood bed/cushion;sofa table set; clothes rack; curtains; carpet.			■
Electrical equipment:air conditioning;water heater;lamps			■
Bedding: quilt; pillow; four piece set, etc.			■
Platform: hot-dip galvanized steel frame and anti-corrosive wood board			■
Guard: stainless steel guard bracket with baking treatment; tempered glass			■

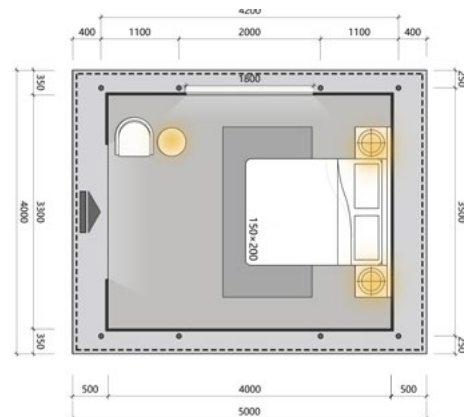
● 标准   ▲ 精装   ■ 豪华

结构：钢木结构；含节点及配件	●	▲	■
篷布：PVC 外帐；帆布内帐；含固定篷布配件	●	▲	■
门窗：帆布门；防水拉链；布帘窗户；含防蚊布纱门窗	●	▲	■
玻璃门：实木门框；铝合金单玻钢化推拉门；电子密码锁		▲	■
隔墙：快装复合墙板；含锁边配件		▲	■
装饰：木饰面纤维板；含收边配件		▲	■
地板：多层实木地板；铝合金地脚线；含防潮膜		▲	■
水电：室内上下水系统，冷热水管系统；总电箱；开关插座面板		▲	■
卫浴：防水地板；复合门；智能坐便器；玻璃隔断；洗漱台 / 镜子；五金配件等		▲	■
家具：实木床 / 垫；沙发茶几组合；衣物架；窗帘；地毯等			■
电器：空调；热水器；全屋灯具			■
床品：棉被；枕心；四件套等			■
平台：热镀锌龙骨架；防腐木地板			■
护栏：不锈钢烤漆护栏支架；钢化玻璃			■



# LAYOUT

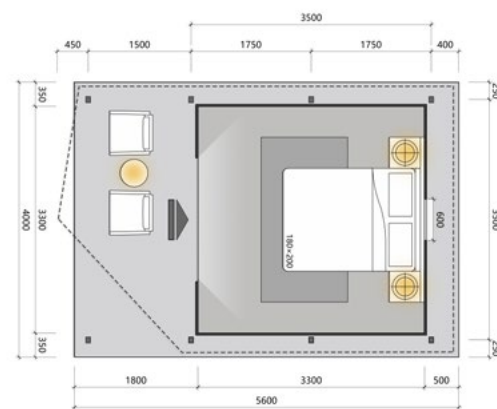
## 空间布局



### A15 DIMENSIONS | 产品参数

- MAIN DIMENSION: 3.5m\*4.2m
- INTERIOR AREA: 13m<sup>2</sup>
- INTERIOR DIMENSIONS: 3.3m\*4m
- TERRACE AREA: 2m<sup>2</sup>
- EXTERNAL HEIGHT: 2.8m
- INTERNAL HEIGHT: 2.5m

- 主体尺寸: 3.5m\*4.2m
- 室内面积: 13m<sup>2</sup>
- 室内尺寸: 3.3m\*4m
- 露台面积: 2m<sup>2</sup>
- 外部高度: 2.8m
- 内部高度: 2.5m



### AX17 DIMENSIONS | 产品参数

- MAIN DIMENSION: 3.5m\*5m
- INTERIOR AREA: 11m<sup>2</sup>
- INTERIOR DIMENSIONS: 3.3m\*3.3m
- TERRACE AREA: 5m<sup>2</sup>
- EXTERNAL HEIGHT: 3.2m
- INTERNAL HEIGHT: 2.9m

- 主体尺寸: 3.5m\*5m
- 室内面积: 11m<sup>2</sup>
- 室内尺寸: 3.3m\*3.3m
- 露台面积: 5m<sup>2</sup>
- 外部高度: 3.2m
- 内部高度: 2.9m

# LAYOUT

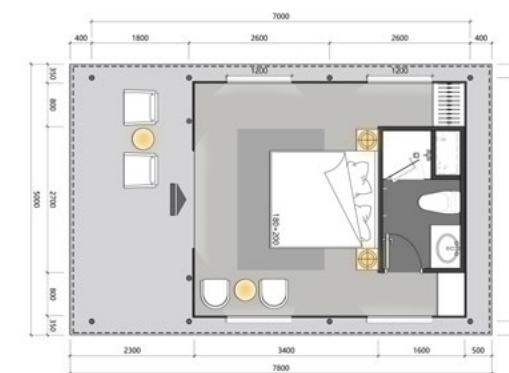
## 空间布局



### AL30 DIMENSIONS | 产品参数

- MAIN DIMENSION: 5m\*6m
- INTERIOR AREA: L1/9.8m<sup>2</sup>、L2/9.2m<sup>2</sup>
- INTERIOR DIMENSIONS: 3.5m\*2.8m
- TERRACE AREA: 12+12m<sup>2</sup>
- EXTERNAL HEIGHT: 2.8m
- INTERNAL HEIGHT: 2.5m

- 主体尺寸: 5m\*6m
- 室内面积: L1/9.8m<sup>2</sup>、L2/9.2m<sup>2</sup>
- 室内尺寸: 3.5m\*2.8m
- 露台面积: 12+12m<sup>2</sup>
- 外部高度: 2.8m
- 内部高度: 2.5m



### B32 DIMENSIONS | 产品参数

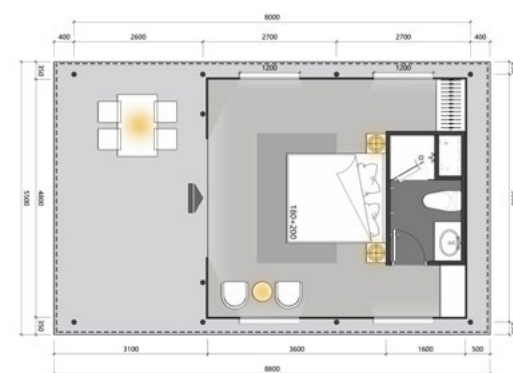
- MAIN DIMENSION: 4.5m\*7m
- INTERIOR AREA: 22m<sup>2</sup>
- INTERIOR DIMENSIONS: 4.3m\*5m
- TERRACE AREA: 8m<sup>2</sup>
- EXTERNAL HEIGHT: 4.2m/2.1m
- INTERNAL HEIGHT: 3.9m/2m

- 主体尺寸: 4.5m\*7m
- 室内面积: 22m<sup>2</sup>
- 室内尺寸: 4.3m\*5m
- 露台面积: 8m<sup>2</sup>
- 外部高度: 4.2m/2.1m
- 内部高度: 3.9m/2m



# LAYOUT

## 空间布局



### B40 DIMENSIONS | 产品参数

- MAIN DIMENSION: 5m\*8m
- INTERIOR AREA: 25m<sup>2</sup>
- INTERIOR DIMENSIONS: 4.8m\*5.2m
- TERRACE AREA: 13m<sup>2</sup>
- EXTERNAL HEIGHT: 4.5m/2.1m
- INTERNAL HEIGHT: 4.2m/2m

- 主体尺寸: 5m\*8m
- 室内面积: 25m<sup>2</sup>
- 室内尺寸: 4.8m\*5.2m
- 露台面积: 13m<sup>2</sup>
- 外部高度: 4.5m/2.1m
- 内部高度: 4.2m/2m



### BL45 DIMENSIONS | 产品参数

- MAIN DIMENSION: 5m\*9m
- INTERIOR AREA: 31+20m<sup>2</sup>
- INTERIOR DIMENSIONS: 4.8m\*6.4m
- TERRACE AREA: 13+11m<sup>2</sup>
- EXTERNAL HEIGHT: 5m
- INTERNAL HEIGHT: 2.2m

- 主体尺寸: 5m\*9m
- 室内面积: 31+20m<sup>2</sup>
- 室内尺寸: 4.8m\*6.4m
- 露台面积: 13+11m<sup>2</sup>
- 外部高度: 5m
- 内部高度: 2.2m

# LAYOUT

## 空间布局

豪帐篷 雅奢造 Luxury tents sourced from YARDS



### BS35 DIMENSIONS | 产品参数

- MAIN DIMENSION: 5m\*6.8m
- INTERIOR AREA: 23m<sup>2</sup>
- INTERIOR DIMENSIONS: 4.8m\*4.8m
- TERRACE AREA: 15.9m<sup>2</sup>
- EXTERNAL HEIGHT: 4.3m/2.5m
- INTERNAL HEIGHT: 4m/2.4m

- 主体尺寸: 5m\*6.8m
- 室内面积: 23m<sup>2</sup>
- 室内尺寸: 4.8m\*4.8m
- 露台面积: 15.9m<sup>2</sup>
- 外部高度: 4.3m/2.5m
- 内部高度: 4m/2.4m



### BS48 DIMENSIONS | 产品参数

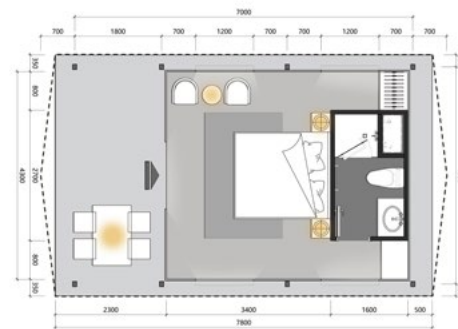
- MAIN DIMENSION: 6m\*8m
- INTERIOR AREA: 34m<sup>2</sup>
- INTERIOR DIMENSIONS: 5.8m\*5.8m
- TERRACE AREA: 16m<sup>2</sup>
- EXTERNAL HEIGHT: 4.3m/2.5m
- INTERNAL HEIGHT: 4m/2.4m

- 主体尺寸: 6m\*8m
- 室内面积: 34m<sup>2</sup>
- 室内尺寸: 5.8m\*5.8m
- 露台面积: 16m<sup>2</sup>
- 外部高度: 4.3m/2.5m
- 内部高度: 4m/2.4m



# LAYOUT

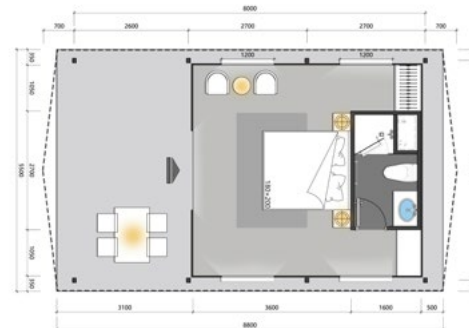
## 空间布局



### E32 DIMENSIONS | 产品参数

- MAIN DIMENSION: 4.5m\*7m
- INTERIOR AREA: 21.5m<sup>2</sup>
- INTERIOR DIMENSIONS: 4.3m\*5m
- TERRACE AREA: 14.8m<sup>2</sup>
- EXTERNAL HEIGHT: 4m/2.2m
- INTERNAL HEIGHT: 3.3m/2.1m

- 主体尺寸: 4.5m\*7m
- 室内面积: 21.5m<sup>2</sup>
- 室内尺寸: 4.3m\*5m
- 露台面积: 14.8m<sup>2</sup>
- 外部高度: 4m/2.2m
- 内部高度: 3.3m/2.1m



### E40 DIMENSIONS | 产品参数

- MAIN DIMENSION: 5m\*8m
- INTERIOR AREA: 25m<sup>2</sup>
- INTERIOR DIMENSIONS: 4.8m\*5.2m
- TERRACE AREA: 13m<sup>2</sup>
- EXTERNAL HEIGHT: 4m/2.2m
- INTERNAL HEIGHT: 3.7m/2.1m

- 主体尺寸: 5m\*8m
- 室内面积: 25m<sup>2</sup>
- 室内尺寸: 4.8m\*5.2m
- 露台面积: 13m<sup>2</sup>
- 外部高度: 4m/2.2m
- 内部高度: 3.7m/2.1m

# LAYOUT

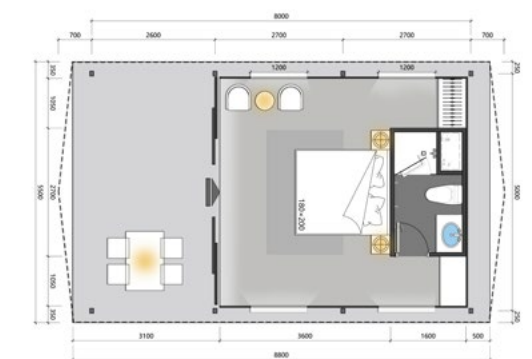
## 空间布局



### EC32 DIMENSIONS | 产品参数

- MAIN DIMENSION: 4.5m\*7m
- INTERIOR AREA: 22m<sup>2</sup>
- INTERIOR DIMENSIONS: 4.3m\*5m
- TERRACE AREA: 14.8m<sup>2</sup>
- EXTERNAL HEIGHT: 4m/2.2m
- INTERNAL HEIGHT: 3.3m/2.1m

- 主体尺寸: 4.5m\*7m
- 室内面积: 22m<sup>2</sup>
- 室内尺寸: 4.3m\*5m
- 露台面积: 14.8m<sup>2</sup>
- 外部高度: 4m/2.2m
- 内部高度: 3.3m/2.1m



### EC40 DIMENSIONS | 产品参数

- MAIN DIMENSION: 5m\*8m
- INTERIOR AREA: 25m<sup>2</sup>
- INTERIOR DIMENSIONS: 4.8m\*5.3m
- TERRACE AREA: 13m<sup>2</sup>
- EXTERNAL HEIGHT: 4m/2.2m
- INTERNAL HEIGHT: 3.3m/2.1m

- 主体尺寸: 5m\*8m
- 室内面积: 25m<sup>2</sup>
- 室内尺寸: 4.8m\*5.3m
- 露台面积: 13m<sup>2</sup>
- 外部高度: 4m/2.2m
- 内部高度: 3.3m/2.1m





## LARGE-SCALE PROJECTS

Hengdian Mengquan Valley Tent Hotel View  
横店梦泉谷帐篷酒店实景

Kerala Sprawl Wilderness Camp Hotel  
喀拉峻无垠之境野奢营地酒店

Shijiazhuang Panglong Lake Happy Hub – Yishui Camping House  
石家庄蟠龙湖欢乐汇 – 亦水营舍

Royal Cyprus Resort Hotel  
塞浦路斯皇家度假酒店



## CONTACT US

联系我们

YARDS HOME TECHNOLOGY CO, LTD.  
广东雅奢建筑科技有限公司

☎ 0086 20 3900 2585

☎ 400-9988-688

🌐 www.yards.com.cn

✉ info@yardstent.com

📍 No. 7, Dong Er Lu, Hengli Town,  
Nansha District, Guangzhou  
广州市南沙区横沥镇东二路 7 号

This gallery is for illustrative reference only. Due to photography and printing reasons, the color and texture of the product may be different from the actual product, please refer to the actual product.

本图册仅作参考。因拍照和印刷原因，产品颜色、纹理可能与实物存在差异，请以产品实物为准。

Pictures may contain non-standard configuration parts, product technical parameters and business terms may change due to regulatory adjustments, please be sure to contact the business manager for detailed information before purchase.

所含图片可能包含非标准配置部件，产品技术参数及商务条款可能因法规调整而变更，购买前请务必联系业务经理获取详细信息。

# Jumeitents

# Yashe Construction Technology



扫码关注「雅奢集团」  
官方公众号了解  
更多资讯



扫码关注「雅奢帐篷」  
官方抖音号了解  
更多资讯



扫码查看「雅奢商城」  
小程序了解更多资讯

Welcome to follow the official account for more brand news  
欢迎关注雅奢官方账号获取更多品牌动态